

PURPOSE

Aims of the pre-conference are to strengthen the knowledge of Mental Health problems in the EU and build a network of health professionals on mental health and mental disorders from a Public Health perspective with Architects and Planners. Since designers have a key role in health protection and promotion, they should be involved, together with health professionals, in planning and designing processes considering the built environment as a place for living, working and relational exchanges.

ABSTRACT

Health refers to an individual and collective status, strongly influenced by the environmental context or by local governments' policies and not merely an issue that exclusively concerns its promotion and protection. The connection between morphological and functional features of urban context and Public Health is a crucial and contemporary aspect, considering the urban drift that defines modern societies.

Researchers and practitioners, both of technical and medical education, identified the need of an interdisciplinary and trans-disciplinary approach, in order to address the main health problems of the city and of contemporary society; there is a need of joint action in order to involve communities starting from the professionals themselves. This bottom-up approach is one of the emerging health challenges for all contemporary cities and the related health systems of the Nations involved.

CHAIR PERSONS



Jutta Lindert

Professor in Public Health at Emden, Germany and Brandeis University, Waltham/Boston, MA, USA. Her research interests focus on the interplay of culture, biology, life events and mental health, and on the long term health impact of violence on health and mental health. President of the Public Mental Health Section, "European Association of Public Health".



POLITECNICO MILANO 1863

Stefano Capolongo

Architect and PhD in Public Health, Professor in Public Health and Hospital Design at Politecnico di Milano. Referent of Cluster "Design of Healthcare Facilities". General Secretary of CNETO (italian national center for building and hospital design) and Coordinator of European Chapter of International Academy "Design & Health".

REGISTRATION



www.ephconference.eu

Pre-conference fees: € 20 for the whole day, including meals and refreshments. If you wish to attend a pre-conference, but not the main conference, please use the online registration and click "pre-conference only" to register.

This preconference is supported and co-organised by the European Commission, DG Research and Innovation.



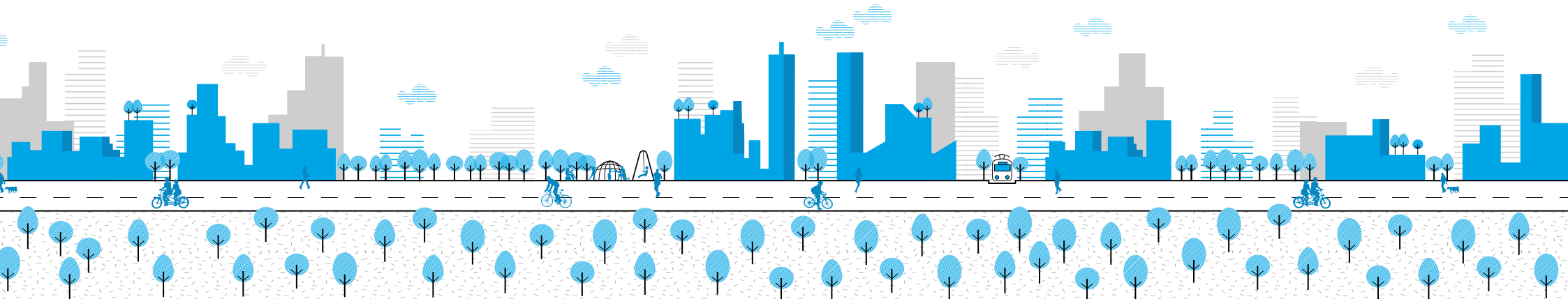
11 th European Public Health (EPH) Conference
"Winds of change: towards new ways of improving public health in Europe"
Cankarjev Dom, Ljubljana, Slovenia

PRE-CONFERENCE

HEALING BUILDINGS, BUILDING HEALING.

Wednesday 28th November

from 9:00 to 17:00 including lunch break
room E.1



DRAFT PROGRAM

Urban Structures and Mental Health

Chair: Stefano Capolongo
Cluster in Design of Healthcare facilities POLIMI

09:00 Climate changes in the “Planetary Health” Vision and urban resilience strategies for Public Health and Well-being.
Maddalena Buffoli
Politecnico di Milano, Milan (Italy)

09:30 Building Urban structures and Public Mental Health across the life course.
Jutta Lindert
Emden (Germany) and
Brandeis University, Waltham/Boston, MA (USA)

10:00 CITY FOR IMAGES.
Towards design strategies for Autism and Mental Health disorders’ friendly cities.
Valentina Talu and Giulia Tola
Università degli Studi di Sassari, Sassari (Italy)

10:30 Healthy break

11:00 The social invisibility of mental health facilities. Raising awareness on social exclusion in urban environments through artwork.
Evangelia Chrysikou
University College London (UCL),
Bartlett Faculty of the Built Environment (UK)

11:30 Strategies to improve health promotion and disease prevention in urban areas: the Erice charter.
Daniela D’Alessandro
Università di Roma La Sapienza (Italy)

12:00 Building healthy environments for mobile populations
NN from Herzog & de Meuron
to be confirmed

12:30 Lunch break

Mental Health across the life course

Chair: Jutta Lindert
EUPHA Public Mental Health Section

13:30 Welcome
Jutta Lindert, Sasa Jenko, Sara Brazys (tbc)

Session 1: Mental Health Policy. State of play and emerging needs.

13.35 How to link research closer to policy and implementation: identify priority areas and strengthen cooperation between stakeholders.
[Panel followed by open discussion]

Moderator: F. Jesús Alvarez Hidalgo

Panel:
Prof José Miguel Caldas de Almeida, EU Joint Action on Mental Health, Nova Medical School
Dr Ionela Petrea, EU Compass for Action on Mental Health and Wellbeing, Trimbos Institute
Ms Emily Hewlett, OECD
Dr Malgorzata Milczarek, European Agency for Safety and Health at Work (EU-OSHA)
WHO (tbc)

15:00 Healthy break

Session 2: Research on mental health throughout the life course. EU efforts and future needs.

15:30 EU support for mental health research
Sasa Jenko & Sara Brazys, European Commission, Directorate Research and Innovation – Public Health and Neuroscience Sectors

15:50 Discussion on future needs for mental health research at the EU level.

Moderator: Prof Josep Maria Haro
Parc Sanitari Sant Joan de Déu –PSSJD

Co-moderators: Sasa Jenko and Sara Brazys
European Commission, Directorate Research and Innovation – Public Health and Neuroscience sectors

Coordinators of EU-funded mental health projects will be invited to kick off the discussion on future research priorities. Panel:

Prof Ed Watkins (ECOWEB)
Prof Christine Freitag (FEMNAT-CD)
Prof Heleen Riper (E-COMPARED)
Prof Marit Sijbrandij (STRENGTHS)
Prof Judit Simon (PECUNIA)
Prof Iracema Leroi (SENSE-COG)

16:45 Wrap up of Session 1 & 2
Round table with the speakers
Take home messages & Closing remarks

Chair: Jutta Lindert
EUPHA Public Mental Health Section

17:00 Conclusion & Greetings